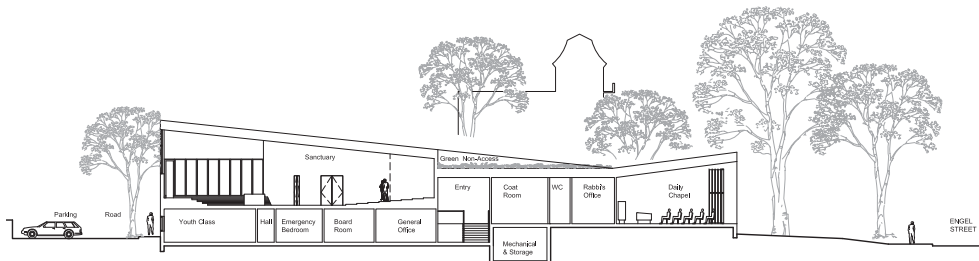
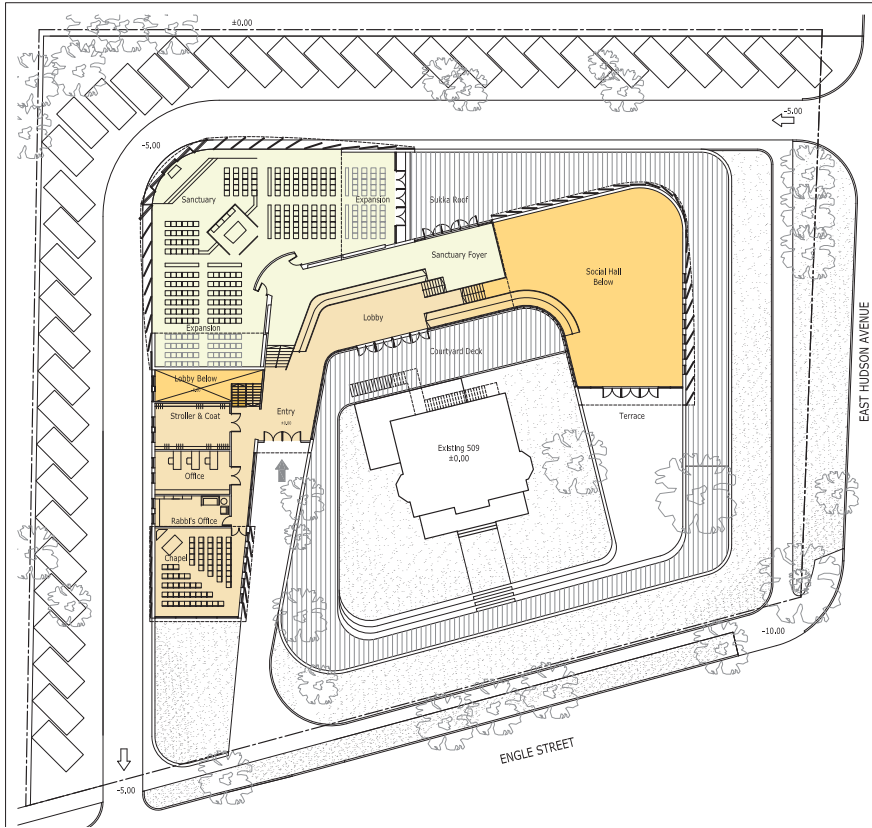




The design scheme was generated as a response to the elusive issue of identity of a religious institution in a suburban context. On the one hand the building is made to expose the presence of the community, and on the other there was the desire to blend it with its environment. The scheme is therefore designed as a continuous loop that sweeps the landscape into the building and out again capturing the entire site. The three more significant programs; sanctuary, social hall and daily chapel, are a more intense and elaborate expression of the otherwise camouflaged volume that blends the building and the landscape. This scheme enables the flexibility of generating presence by increasing or decreasing the “volumes”.

- Winning Competition and Commission

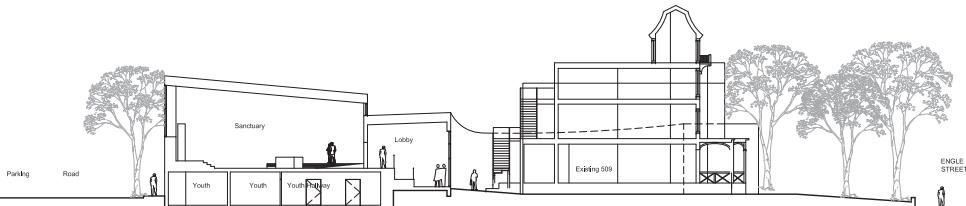
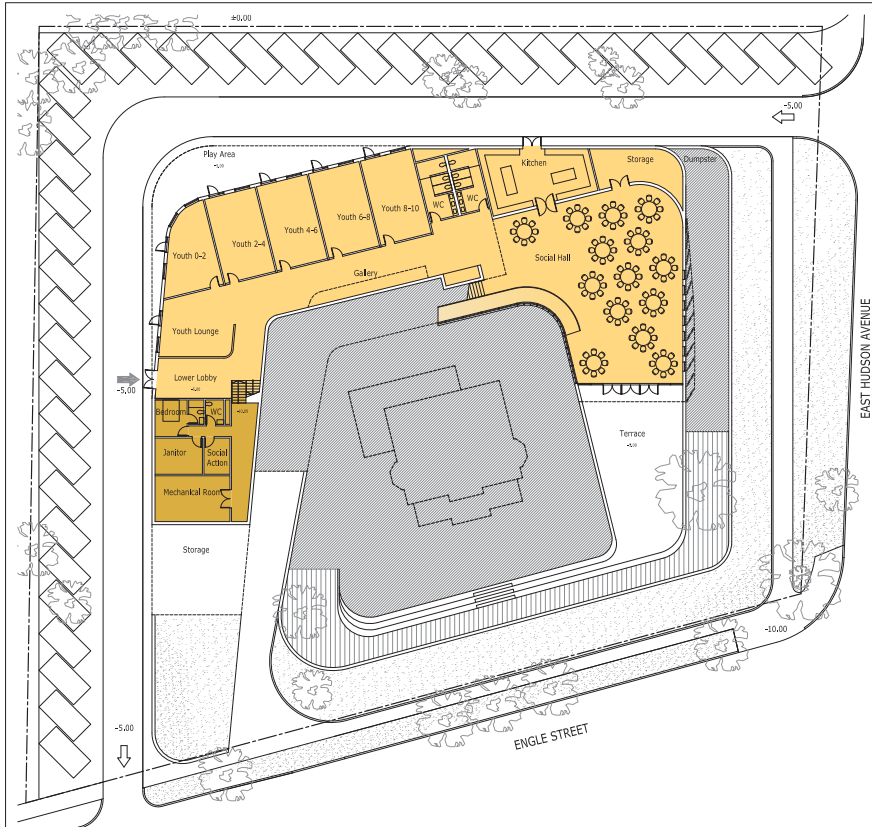




OVERALL VIEW

KESHER COMMUNITY CENTER





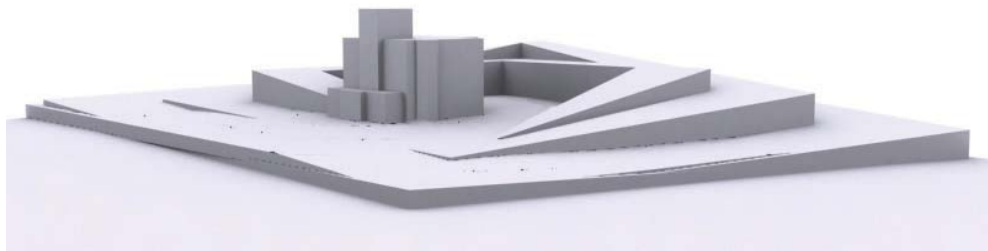


VIEW OF DAILY CHAPEL AND MAIN ENTRANCE

KESHAR COMMUNITY CENTER







PUBLIC

09

KESHER COMMUNITY CENTER

- Date: - Commissioned: 2009
- Client: - Keshet Community
- Budget: - \$4,500,000
- Area: - 18,000 sq.ft.
- Location: - Englewood, NJ